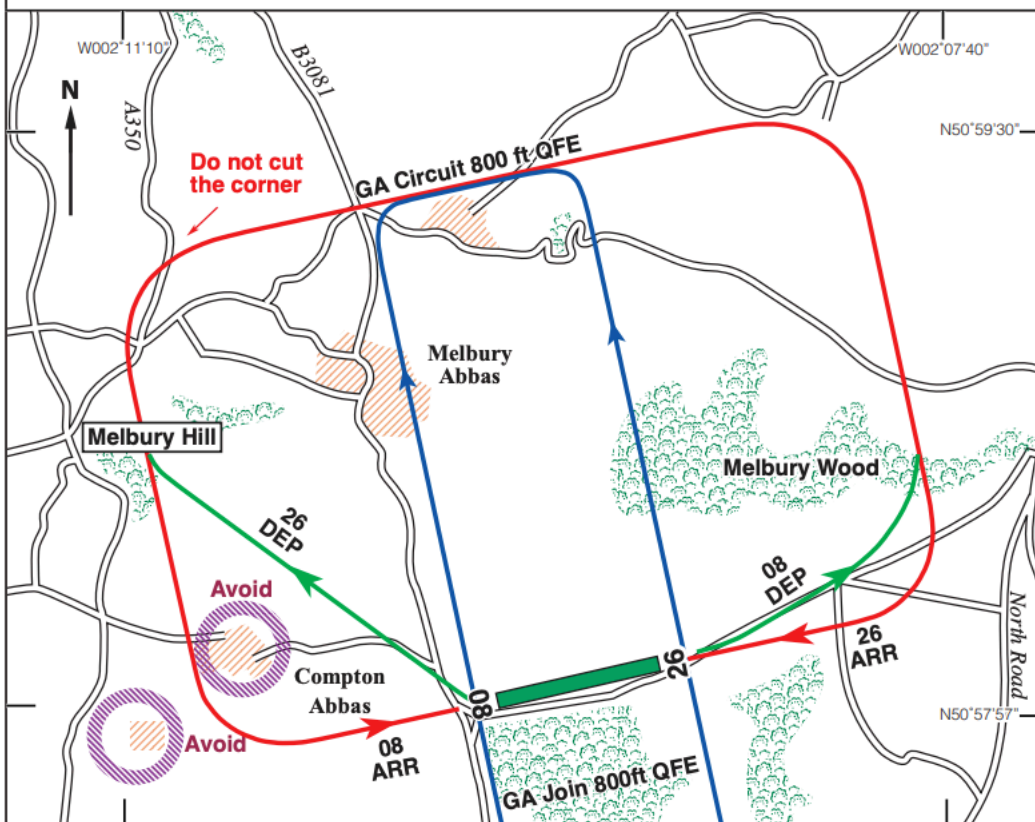


EGHA

COMPTON ABBAS Noise Abatement and Circuits



The airfield operates in an area of outstanding natural beauty, and to maintain the existing good relationship with the community, please observe good airmanship and avoid overflying hamlets and villages in close proximity to the airfield.

Departing and going around aircraft are not to be above 400ft QFE when crossing the upwind numbers

Arrivals:

Rwy 08 - A normal approach, but please avoid getting low on final approach or using excessive power settings when overflying Compton Village.

Rwy 26 - A normal approach.

Departures:

Rwy 08 - As soon as practicable turn left in order to avoid overflying Hatts Barn Farm.

Rwy 26 - As soon as practicable turn right in order to avoid Compton village and crossing Melbury hill. Avoid overflying any part of Compton Abbas village.